

MARYLAND DEPARTMENT OF



PLANNING



2018 Annual Report

*Supporting Communities, Preserving Resources, Enriching Lives...
Changing Maryland for the Better*

On the cover:

City of Hagerstown overlooking Public Square in City Center (upper left),

Dairy Farm in rural Carroll County (upper right),

Farmland in St. Inigoes, St. Mary's County (lower left),

Town of Ocean City looking south from 18th Street and the Boardwalk (lower right)



A Message from Governor Larry Hogan

I am pleased to present the Fiscal Year 2018 Annual Report for the Maryland Department of Planning (Planning). Under our administration, Planning continued working to change Maryland for the better through support for communities, responsible growth, and resource conservation. We remain focused and dedicated to creating jobs, helping Maryland families thrive, and restoring our state's economy, guided by simple, common sense principles.



In summer 2017, I signed an executive order directing Planning to prepare a revised state development plan through coordination and collaboration with the Smart Growth Subcabinet, the Maryland Sustainable Growth Commission, local governments, and other stakeholders. Recognizing that top-down, one-size-fits-all solutions do not work, ***A Better Maryland*** will be a dynamic, evolving plan that provides a framework for a strong economy and environmental stewardship.

I invite you to read about Planning's full range of activities and accomplishments, including the ongoing development of ***A Better Maryland***. This FY 2018 Annual Report demonstrates our commitment to providing excellent customer service and assistance to local partners, while recognizing the unique nature of each region in our state that supports economic development and the preservation of Maryland's natural resources.

Our administration is working diligently to ensure that Maryland remains a vibrant place to live, work, and raise a family. We have accomplished a great deal, and I am confident that together, we will accomplish much more.

Sincerely,

A handwritten signature in black ink that reads "Larry Hogan". The signature is stylized and cursive.

Larry Hogan
Governor



A Message from the Secretary



Planning's annual report for Fiscal Year 2018 highlights our activities and accomplishments in service to the state as we worked to advance the priorities of the Hogan Administration. We are focused on supporting communities, preserving resources, and enriching lives as part of an overall effort to change Maryland for the better.

It is our mission at Planning to collaborate with state agencies, local governments, and the public by providing technical assistance and data that enables each community to shape its future in a way that reflects local values, honors its heritage, and presents opportunities for all of Maryland to flourish.

There is no more meaningful way to further this mission than to begin to bring together the new state development plan as directed by Governor Hogan at the beginning of FY 2018. Known as ***A Better Maryland***, it is a dynamic, evolving plan that provides a framework to support a thriving economy and environmental stewardship. The plan supports collaboration among state and local governments and other stakeholders, providing resources and tools for the long term economic success of Maryland. Planning completed our first round of listening sessions in all 23 Maryland counties and the city of Baltimore in FY 2018. For more information describing our work in the development of ***A Better Maryland***, see the feature on page 10.

As home to the State Data Center, Planning is a repository of employment, educational, and demographic information from multiple sources. The largest source of these data is the U.S. Census. As Governor Hogan's Liaison to the U.S. Census Bureau, we are looking ahead to the 2020 Census. Planning is preparing its outreach plan to help assure a complete count of Maryland residents.

Together, we are changing Maryland for the better. Planning stands ready to assist, bringing our full portfolio of professional staff, data resources, and programmatic assistance across the state. We are helping each area of our state plan for a prosperous future, while preserving the natural, historical, and cultural resources that make Maryland our home.

Sincerely,

A handwritten signature in black ink, appearing to read "Robert S. McCord". The signature is fluid and cursive, with a long, sweeping underline.

Robert S. McCord
Secretary



Table of Contents

<i>Introduction</i>	2
<i>Operations</i>	4
<i>Planning Services</i>	5
<i>A Better Maryland</i>	10
<i>Maryland Historical Trust</i>	23



Special Secretary Wendi Peters and Secretary Robert McCord present at a public listening session for ***A Better Maryland*** in Queen Anne's County.

Planning began the process of forming the new state development plan, ***A Better Maryland***, following Governor Hogan's executive order.



Introduction

The Maryland Department of Planning (Planning) serves the state by providing technical assistance, program guidance, data analysis, and outreach to local governments. We assist state agency partners and provide timely data to the private sector and the general public. Our work reflects the priorities and direction of the Hogan Administration, including a heightened focus on efficiency while emphasizing economic development, flexibility, and collaboration with local jurisdictions.

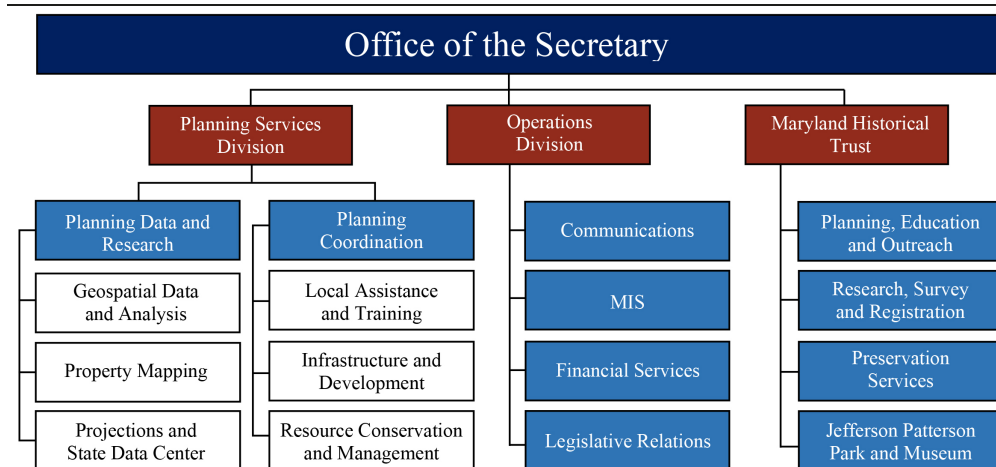
Planning, serving its constituent base with 130 employees, is organized into three divisions: Operations, Planning Services, and the Maryland Historical Trust.

Operations is responsible for the administrative support for the department including financial, information technology, procurement, logistics, and legislative relations. The communications section coordinates outreach to promote the department's initiatives and services in order to develop and strengthen relationships, as well as support the administration's legislative and policy initiatives.

Through **Planning Services**, Planning typically completes more than 200 technical assistance projects for counties and municipalities per year. We provide support in reviewing or drafting dozens of comprehensive plans or ordinances for local governments each year. We also collect, analyze, and publish social, economic, and geographic information and maintain the digital maps of the state's 2.3 million parcels. These maps form the foundation for the development of policies and are used throughout the state by various agencies, decision makers, and stakeholders. We also ensure that proposed financial and non-financial assistance projects within Maryland are consistent with state and local laws, regulations, and guidelines.

The **Maryland Historical Trust (the Trust)** is dedicated to preserving and interpreting the legacy of Maryland's past. The Trust serves as Maryland's State Historic Preservation Office (SHPO) and provides direct assistance to a broad base of local, state, and federal stakeholders in the identification, protection, and enhancement of heritage resources. The Trust administers a variety of historic preservation grant, loan, and tax credit programs including the Heritage Structure Rehabilitation Tax Credit, which leverages private investment in the rehabilitation of both commercial and residential historic properties. The Trust also administers and oversees operation of the Jefferson Patterson Park and Museum in Calvert County, which includes the Maryland Archaeological Conservation Laboratory.





Planning sees Maryland’s cities, towns, and communities as attractive, vibrant places to live, work, play, and learn. We help communities shape a vision for their future that continues to protect and preserve our resources. We view the natural, cultural, and historic resources of our communities as catalysts that strengthen and renew economic and community development.

At Planning, we value Maryland’s unique diversity with its people and geography and recognize that successful solutions require balancing the concerns of various stakeholders. It is our responsibility to provide guidance for the direction of state resources most efficiently across jurisdiction lines. We strive to provide customers with the best service and to help each jurisdiction implement their vision and achieve their goals consistent with respect for people and place.



Planning staff shows the department’s latest public engagement tool, the touch display screen, to Governor Larry Hogan at the 2018 Maryland Municipal League conference. The touch display screen was used to introduce the recently released Reinvest Maryland 2.0 web-based tool to the attendees of the conference.



Operations

In addition to continued focus on the governor’s customer service initiative, Planning’s Operations Division provided agency-wide support and support to other agencies.

Management Information Systems (MIS) of the Department of Planning assisted the Maryland Tax Court as they developed their new web-based application database in FY 2018. The project modernized the platform, which provided the opportunity for future uninterrupted use and updated reporting functions. Planning’s assistance saved the state more than \$50,000.

Communications supports the agency by highlighting the work of Planning throughout the state. Communications uses social media platforms to provide information about initiatives across the state including: *A Better Maryland*; Reinvest Maryland 2.0; the Maryland Buy Local Challenge; Maryland Heritage Areas; the Patuxent River Wade In; and Farmer’s Market Week.

Legislative Relations works with our sister agencies on the Chesapeake Bay Cabinet to support important initiatives in Maryland. For example, this year we were pleased to support House Bill 252, Land Use - Agritourism. The bill provides a model definition of “agritourism” that local jurisdictions may adopt in order to expand Maryland’s value-added farming industry, including weddings, vineyards, and breweries. Agritourism is an emerging business practice that supports the local economy by expanding Maryland’s largest industry. The bill passed the Maryland General Assembly and was signed into law by Governor Larry Hogan on May 15, 2018.

Planning Secretary Robert McCord and Special Secretary of Smart Growth Wendi Peters joined staff from the Maryland Department of Agriculture and others as HB 252 was signed into law by Governor Hogan.



Planning Services

The Planning Services Division is the core of the agency's planning-related functions. The Division's personnel are organized into two sections: 1) Planning Coordination, which includes Local Assistance and Training, Infrastructure and Development, and Resource Conservation and Management; and 2) Planning Data and Research, which includes Geospatial and Data Analysis, Projections and State Data Center, and Property Mapping. The following highlights some of the many activities and contributions of Planning Services in support of the agency's strategic plan and mission.

Planning Coordination

Local Assistance and Training

Comprehensive Plan Review and Policy Guidance

We provided significant technical and policy assistance to local governments implementing state laws. Regional planning staff completed reviews of 18 local comprehensive plans and amendments in FY 2018. In addition, they reviewed 19 municipal annexations.

Local Technical Assistance

The core function of Local Assistance and Training is providing technical assistance to jurisdictions, including helping them navigate federal and state regulations or providing the resources that smaller municipalities cannot deploy. Some examples of technical assistance provided in FY 2018 include:

Town of Eagle Harbor, Prince George's County: Planning staff assisted town representatives with the completion and submission of a Sustainable Communities designation application.

Town of Indian Head, Charles County: The regional planner for Southern Maryland assisted the Town of Indian Head in coordinating with the neighboring Naval Support Facility in Indian Head, as well as with establishing a vision for its downtown streetscape.

Town of Williamsport, Washington County: At the town's request, the regional planner for Western Maryland, along with Planning's GIS staff, drafted a Town Land Use Map in support of a zoning ordinance update.



Town of Chestertown, Kent County: With representatives from the Governor’s Office and the Department of Commerce, the Secretaries of Planning and Housing and Community Development identified potential partners in funding the infrastructure necessary for the Dixon Valve project, which will retain 300 jobs in the county and ultimately create 400 new jobs.



Dixon Valve growing at the Chestertown Business Campus.

Talbot County: The Lower Eastern Shore Regional Office assisted Talbot County through the comprehensive planning, water and sewer planning, and Priority Funding Area exception processes, in order to extend public sewer to its rural villages and other properties.

Interagency Coordination and Subcabinet Support

Smart Growth Subcabinet: In FY 2018, staff reviewed and provided feedback on 24 Sustainable Community applications and conducted site visits to, and submitted comments on, hundreds of revitalization grant applications.

Commerce Subcabinet: Two regional planners participated in an interagency working group supporting the Maryland Department of Commerce’s Department of Defense Office of Economic Adjustment grant. As part of this effort, a draft Statewide Joint Land Use Study (SJLUS) was completed, which makes recommendations for compatible land use and collaboration with Maryland’s military installations.

Transportation Coordination: In FY 2018, staff developed a draft comprehensive plan transportation element checklist; set up a system to engage jurisdictions in transportation planning early by tracking pending updates; engaged the town of La Plata in a pilot assistance program; and continued to review Maryland Department of Transportation Consolidated Transportation Program (CTP) priority letters for consistency with comprehensive plans.



Climate Change Commission Support: As a member of the Maryland Commission on Climate Change (MCCC), Planning participates on the Adaptation Working Group, providing constructive feedback on this commission's procedures, work plans, and policy recommendations. Planning also provided its annual report to the MCCC on greenhouse gases prevented through compact development in Maryland. Planning reviewed all 23 counties' and the City of Baltimore's climate adaptation plans, Montgomery County's Climate Protection Plan, and the City of Baltimore's Disaster Preparedness and Planning Project Plan to determine how each jurisdiction is preparing for climate change impacts.

Patuxent River Commission Support: Planning provides administrative support to the Patuxent River Commission (PRC), which is tasked with supporting local government and state agency implementation of the *Patuxent River Policy Plan*. This year, the PRC launched the Patuxent River Challenge, which encourages exploration of many ecological and historic amenities within each county in the Patuxent River watershed.

Appalachian Regional Commission: Planning's Western Maryland regional planner serves as the Program Manager for the Appalachian Regional Commission (ARC) facilitating federal, state, and local cooperation and resources to advance economic, community and workforce development in the three Western Maryland counties: Allegany, Garrett, and Washington. Our ARC work includes improving accessibility in the region through local road improvements and extension of broadband service to businesses and communities, enhancing educational opportunities and workforce development, and assisting communities to develop strategies for economic development uniquely focused to maximize the potential of their assets. The shared goal is to create a self-sustaining and growing economy. In FY 2018, the ARC supported 18 projects leveraging more than \$13 million in investment. Some of those projects include:

- Completion of feasibility study to evaluate technical, economic and regulatory feasibility of a potential Autonomous Technology Center to position Maryland as a leader in autonomous technology research and development.
- Providing new STEM program training opportunities at Garrett Community College including a virtual dissection table for anatomy education. The table is used for classroom training, state paramedic instruction, and retraining for hospital professionals.



Planning by the Numbers

*Federal FY 2017**

ARC in Maryland

- 18 supported projects
- \$1.5 million investment by ARC
- \$6.6 million in matching funds
- \$13 million leveraged investment

This adds up to:

Jobs created and retained, workers/students trained or educated, Increased economic development and quality of life for 252,000 residents.

*Federal fiscal year October 1, 2016 through September 30, 2017. Federal FY 2018 information not available at time of Planning's report.



- Investing in equipment for the new Energy and Trades Training Center at Hagerstown Community College. The program will provide hands-on learning activities in courses and programs leading to energy technology and building trades careers.
- Western Maryland Fiber project providing the last connections necessary for high-speed broadband in Allegany and Garrett counties. The project will also provide high speed fiber internet to seven industrial parks.
- Funding construction of a water tank and related infrastructure for the Keyser’s Ridge Business Park. The project will provide storage and adequate pressurized water to allow for the development of the park and serve 17 existing businesses.
- Purchasing a Telemedicine Communication System for Garrett Regional Medical Center to engage in patient consultations with specialists. The hospital is now able to provide better services to patients, expand educational opportunities for staff, and attract medical professionals with the addition of this technology
- Frostburg State University funding to establish an Unmanned Aerial Vehicle (UAV) Remote Sensing Center. The center will provide training in flight operations, maintenance, and management of UAVs, data acquisition and storage, digital image processing, and coordination with ground based GPS.

INVESTMENT PRIORITIES IN MARYLAND



READY WORKFORCE

ARC invested nearly **\$538,000** to increase the education, knowledge, skills, and health of Maryland’s Appalachian residents to work and succeed.



CRITICAL INFRASTRUCTURE

ARC invested over **\$692,000** in Maryland’s critical infrastructure development, including broadband, transportation, and water/wastewater systems.



LEADERSHIP AND COMMUNITY CAPACITY

ARC invested **\$209,000** to build the capacity and skills of Appalachia’s current and next-generation leaders and organizations in Maryland to advance community and economic development.



ADDITIONAL PRIORITIES

ARC invested an additional **\$98,000** to strengthen the economy in Appalachian Maryland, including support for autonomous technology and STEM initiatives.



Education and Training

Local Assistance and Training oversees Planning's educational efforts, both locally and statewide. Staff is responsible for Planning's newsletter, Planning Practice Wednesday (PPW), along with posting available trainings, conferences, webinars, and funding on the PPW website. In FY 2018, Planning published 11 newsletters with topics ranging from local staff interviews to Maryland's public-school financing program. Education and training includes working with professional planners, citizen planners, and students.

Maryland Planning Commissioners Association: Staff conducted seven community meetings, along with an online survey, as part of an outreach project in support of the MPCA. The MPCA Board is using the information gathered to develop a strategic plan.

Local Assistance and Training also assisted MPCA in conducting its annual fall conference in Easton, with more than 50 registrants and the inclusion of Open Meetings Act training (requested by participants during the outreach project). Staff oversaw the online Planning Commissioner Training Course and multiple in-person trainings in FY 2018, totaling 178 new certificates of completion.

Internship Programs: The Lower Eastern Shore regional office continued its close relationship with Salisbury University (SU) and the cultivation of future planners with its Critical Area Circuit Rider internship program. In FY 2018, Planning staff supervised two interns. Planning also brought in a Morgan State University (MSU) student to populate the assets and challenges map from the *A Better Maryland* listening sessions and provide GIS support on the development of a brownfield sites layer.



Planning by the Numbers

2018

Planning Practice Wednesday
1,020 Subscribers
34% growth in FY 2018 subscribers
30,960 recipients

This adds up to:
Connecting, informing, and serving local officials, planners, and partners.

Planning holds live training for planning commission and boards of appeal members several times through the year. Chuck Boyd conducts training for commission and board members and local officials at the Maryland Association of Counties summer conference.

A Better Maryland

In the summer of 2017, Governor Hogan signed Executive Order 01.01.2017.18 directing the Maryland Department of Planning to coordinate with local governments and other stakeholders to prepare a new state development plan. This is an opportunity to work together on a 21st century plan moving Maryland forward – growing responsibly and protecting our resources.

The Department of Planning under Governor Hogan has been focused on respect and support of local government and working with stakeholders to achieve their vision for their community. As a result, our work has consisted of extensive outreach to solicit input from local leaders, the public and other stakeholders as we formulate the new plan. We are proud that during the first round of outreach we had 72 meetings in our 23 counties and the city of Baltimore. In each jurisdiction we held three meetings: elected and appointed officials; economic development and planning staff; and the public. In addition, we met with various interest groups, held two webinars with more than 150 participants and hosted an online survey which garnered more than 1700 responses. Following the initial 72 meetings, Planning staff compiled and analyzed input in partnership with other state agencies, the Smart Growth Subcabinet, the Maryland Sustainable Growth Commission, American Planning Association (APA) Maryland, and planning directors from across the state.



Governor Larry Hogan announced the new state development plan was to be completed by the Maryland Department of Planning.

“The process to develop a new state development plan will be transparent and collaborative with the primary goal of creating a better framework for a better Maryland. The state will work closely with citizens, counties, and local jurisdictions. Most importantly, we will finally put local planning authority back into the hands of local governments – where it belongs.”

Governor Larry Hogan



Nearing the one-year mark of the announcement, the Governor's Smart Growth Subcabinet, chaired by Special Secretary of Smart Growth Wendi Peters convened an open forum on June 13, 2018 at the Maryland Municipal League summer conference to address comments gathered from the first round of listening sessions.

A Better Maryland



The feedback submitted demonstrates that Marylanders overwhelmingly support both economic development and environmental preservation. We have strong communities that desire the opportunity to have a good job and a clean environment.

This new state development plan, *A Better Maryland*, is a dynamic, evolving plan that provides a framework to support a thriving economy and environmental stewardship. The plan will support collaboration among state and local governments and all other stakeholders, providing resources and tools for the long term economic success of Maryland.

We completed our phase one outreach, spent the summer analyzing the feedback, identifying issues and developing strategies. We are back on the road in the fall of 2018 continuing the discussion and receiving feedback. Pursuant to the Executive Order, we will report back to the Governor before July 2019.



Chuck Boyd, Director of Planning Coordination, provides background on the *A Better Maryland* process at the Prince George's County public listening session.



Joe Griffiths, Local Assistance and Training manager, guides participants through a live polling exercise at a public listening session in Kent County.

Infrastructure and Development

Interagency Commission for School Construction

Planning remains one of three state agencies involved as a member of the Interagency Commission for School Construction (IAC), the nine-member commission that oversees Maryland's \$350 to \$400 million investment in K-12 school facilities. Planning staff works closely with the Executive Director, the Department of General Services, and the 24 Local Education Agencies (LEAs) across the state.

Each year, Planning also works closely with local facility planners as enrollment projections are reconciled. This data forms the basis of each LEA's Educational Facilities Master Plan, which is reviewed by Planning, and precedes the creation of a Capital Improvement Program (CIP) containing each IAC-approved project. Planning also began reviewing all State Rated Capacities for school facilities in the state in FY 2018.

In FY 2018, Planning worked closely with IAC staff on proposed facility sufficiency standards that will provide an objective measurement of facility status to inform the need for future investments. Planning and IAC staff are also working to improve efficiencies, increase the sharing of information with LEAs, and setting the stage for a new business management system to be implemented in by the IAC by FY 2019.



Allegany High School in Allegany County is an example of a modern school facility meeting the needs of an established community.



Transportation Planning

To support Transit-Oriented Development (TOD) and transit investment, Planning develops a variety of planning tools to assist MDOT, local communities, stakeholders, developers, property owners, and others in their TOD planning and implementation efforts.

In FY 2018, Planning completed a TOD implementation classification scheme for all 129 transit stations in Maryland, including the Purple Line, to help maximize investment effectiveness and promote community transformation by addressing the need for socioeconomic equity in disadvantaged communities. The TOD classification analysis enables stakeholders and agencies to identify opportunities and challenges in each station area and helps to guide TOD investment in these areas. In addition, Planning is building a user-friendly web-based dashboard interface to enhance transit station area data profile presentation and establish a streamlined process for future data maintenance and update.

In FY 2018, the unit participated in more than a dozen major transportation studies across the state and provides input on projects to promote multimodal transportation planning that supports state and local growth management policies and goals.

Smart Growth Information Clearinghouse

Planning manages the Smart Growth Information Clearinghouse under a cooperative agreement with the U.S. Environmental Protection Agency (EPA). The Clearinghouse is the online home of the Smart Growth Network (smartgrowth.org), a national partnership of more than 40 organizations dedicated to promoting and implementing the principles of smart growth.

Planning generates and distributes a smart growth e-newsletter to more than 10,000 recipients nationwide and hosts a series of webinars directed to planners where participants may earn American Institute of Certified Planners continuing education credits.

Maryland's Power Plant Research Program

Planning serves on the Power Plant Research Program (PPRP) interagency committee, which reviews proposed medium to large-scale energy-generating facilities in Maryland, while ensuring that demand for electricity is met at a reasonable cost and the state's valuable natural resources are protected. Recent legislative changes require that applicants comply with local plans and zoning, and Planning routinely checks in with local planning officials to ensure that communication among the parties is ongoing throughout the review process. Planning completed 12 PPRP reviews in FY 2018, mostly solar projects, and began a preliminary review of an additional 10.



Reinvest Maryland

Planning collaborated with the Maryland Sustainable Growth Commission and its Reinvest Maryland workgroup to finalize and publish the Reinvest Maryland Toolkit, also known as Reinvest Maryland 2.0. After more than a year of development, the Toolkit was released to the public in June 2018 and a new website went live with the first set of 25 case studies.

Reinvest Maryland 2.0 is a guide to accelerating infill, redevelopment and community revitalization. This important resource addresses all aspects of the redevelopment process, including: promoting reinvestment; regulatory reform; and financing tools and programs. It also includes a set of policy recommendations.

Reinvest Maryland 2.0 provides guidance for all levels of government to work together, strengthen collaborative efforts to support revitalization and reinvestment, and engage stakeholders in supporting Maryland's communities to improve the quality of life. The report examines redevelopment in Maryland and identifies tools, case studies, and best practices that support revitalization in existing communities.

The website is built upon an interactive platform that enables the public to read about these redevelopment practices and click on maps and other media that illustrate these examples and provide links to contacts and other information.

Planning staff will continue to build on the website, adding material and enhancing its functionality as state agencies and local jurisdictions continue to provide examples of the best ways to create vibrant places with a range of housing, employment, and transportation options in Maryland.

The Reinvest Maryland 2.0 website site contains case studies of infill development, redevelopment, and community revitalization projects across Maryland. The site displays maps, links visitors to more information about best practices, and includes a searchable toolbox of state programs supporting reinvestment.




Resource Conservation and Management

State Clearinghouse for Intergovernmental Assistance


The State Clearinghouse for Intergovernmental Assistance (the Clearinghouse) is Maryland's designated single point of contact to coordinate local government and state agency review of federal or state projects involving financial assistance or development. The review, which is mandated by federal and state executive orders and state law and regulations, facilitates alignment of plans and policies between federal, state and local government. All projects and reviews can be accessed on Planning's website via the Intergovernmental Monitor.

Chesapeake Bay Restoration Planning

Planning provides long-term planning and local government perspective to the Maryland Bay Workgroup, which provides recommendations to the Governor's Bay Cabinet. In FY 2018, to support one component of Maryland's draft Phase III Watershed Implementation Plan, Planning identified a detailed approach to account for the nutrient and sediment benefits of existing local and state land conservation and land use programs and policies in Maryland.



<i>Planning by the Numbers</i>	<i>FY 2018</i>
72 Reviews of Water and Sewer Plan Amendments	
9 Recertifications of Local Agricultural Preservation Programs	
23 Application Reviews for Rural Legacy	
6 Reviews of Land Preservation, Parks, and Recreation Plans	
23 Review Letters for Program Open Space	
This adds up to:	
Preserving and protecting the environment with a focus on restoration and protection of our treasured Chesapeake Bay.	



Planning Data and Research

The Planning Data and Research section uses analytical tools and processes to provide the public, local and state officials, and decision makers timely and accurate data and analysis. This section includes the Geospatial Data and Analysis, Projections and State Data Center, and Property Mapping units.

Geospatial Data and Analysis

Foundational Data Updates

New Annexation PFA Determinations: Thirty-nine new annexations were submitted for review to regional planners to determine the potential Priority Funding Area (PFA) status after the annexation has been approved and completed. This process is completed before an annexation is approved by the submitting community to streamline the PFA approval process.

Municipal Annexations: Thirty-seven new annexations in 24 municipalities were mapped once the community approved the annexation and submitted the appropriate documentation to complete the process. Once mapped, data and applications were updated with the newest annexations.

Protected Lands GIS Database: Data are gathered from state and local agencies and private conservation organizations, aligned to *MdProperty View* parcel polygons, and integrated into a single geographic information systems (GIS) dataset. The data enable Planning to complete the analyses that support various local planning efforts and create custom maps showing the distribution of protected lands.

Statewide Sewer Service Area Update and Amendments: Planning works with every county and municipalities in the state in collecting sewer service area data. Planning also updated state sewer service data to reflect hundreds of recent county Water and Sewer Plan amendments approved by MDE. Planning is the sole state agency which updates and maintains a Statewide Sewer Service Area Database.



MALPF Updates: Under an agreement with the Maryland Department of Agriculture, Planning updated GIS polygons for new Maryland Agricultural Land Preservation Fund easements and produced maps in PDF format for use at Board of Public Works hearings. The unit then integrated settled easements into Planning's Protected Lands Database in support of GIS analyses.

Generalized Zoning Update: Planning initiated a new update to one of the functional data layers, generalized zoning. This layer provides the only statewide comparative map of all 24 jurisdictions zoning maps.

Analysis

Bay Restoration Fund Analysis: As statutory members of the Bay Restoration Fund Advisory Committee (BRFAC), Planning and MDE advise the BRFAC with the best available information and data analysis.

Annual Rural Legacy Submission Analysis: Planning completed an annual review and evaluation of Rural Legacy funding applications under a Memorandum of Understanding with DNR, to further the goals of preserving large, contiguous tracts of land that enhance natural resources, agricultural, forestry, and environmental protection.

Support for the Phase Six Chesapeake Bay Model: Planning collaborated with the Chesapeake Bay Program and local governments by providing data and analysis for several Bay Model scenarios. The data is critical to the re-evaluation of watershed implementation plans to reduce nutrient and sediment loads under the U.S. EPA's Total Maximum Daily Load (TMDL) regulations.



Volunteers plant sea grass as part of a restoration effort in the Patuxent River. Restoration of sea grass beds is beneficial to the Chesapeake Bay and its tributaries. It is key to our aquatic ecosystems due to its role in nutrient absorption and recycling.



Projections and State Data Center

Data Publication and Availability

The State Data Center maintains more than 90 datasets, including population and household projections, school enrollment, median income estimates, and statistics on retail establishments and farms. These are posted on the Maryland Open Data Portal and are foundational to the analysis of public and private sector users through the state.

The Data Center also updated the Census Planning Database that is used to fulfill public and local government data requests. The State Data Center also prepared a variety of data products for various purposes.

Statewide Public School Enrollment Projections

The State Data Center prepared the 2018-2027 public school enrollment projections report which forecasts public school enrollments by grade for all 23 counties of Maryland and Baltimore City.

Population Estimates

The State Data Center prepared national and state-by-state analyses of the annual U.S. Census Bureau Population Estimates. Population estimates were analyzed for Maryland and its counties and municipalities through 2018. As part of the Maryland population estimates analysis, Planning also prepared detailed tables for age, race, and sex for the state and its 24 jurisdictions.

Population and Household Projections

Planning updated population and household projections by age, race, and sex for Maryland and its 24 jurisdictions. The projections are from 2015 to 2045 and are prepared at five-year intervals.

Statewide Demographic Data and Analysis

The State Data Center prepares an analysis report every quarter of the Federal Housing Finance Agency's (FHFA) Home Price Index. The report examines trends in single-family home prices in the U.S., Maryland and its metropolitan regions.

The State Data Center also prepared detailed tables and reports for the 2012-2016 and 2017 American Community Survey (ACS) five-year and one-year data. This analysis of the data includes a comparison with prior year ACS data. Data were compiled for Maryland and its jurisdictions, Congressional districts, places and metro areas.



Additionally the State Data Center also prepared detailed county-to-county migration data for all Maryland jurisdictions, identifying county in and out-migration.

Housing Sales and Development Data

Planning prepared a residential sales summary report, which shows the number of residential sales by type of residence and the median residential sales value by type of residence. Data are provided inside PFA and outside PFA for all jurisdictions in Maryland.

Annual, monthly, and quarterly building permit reports on single-family and multi-family residential units were updated and published for Maryland and its 24 jurisdictions. Authorized building permit data for all residential developments (single-family, multi-family, and other) were tabulated monthly and published on the State Data Center website. Annual reports are available online from FY 1999 to FY 2016 (FY 2017 to be online by end of 2018), quarterly reports through 2nd Quarter 2018, and monthly reports through July 2018.



Planning's Projections and State Data Center unit monitors development trends, analyzes social, economic and other characteristics, and prepares population, housing, employment, labor force, and income projections, which provide the baseline for planning for growth and development in Maryland. A wealth of data and information products are published to users through the department's website.



Localized Economic Analyses

In support of the Transit-Oriented Development (TOD) project, a comprehensive database was developed to help identify the socioeconomic characteristics of the population within a half-mile radius of each train station in Maryland.

Staff updated annual jobs and income data—available from the U.S. Bureau of Economic Analysis—for the 50 states and the District of Columbia, and for Maryland's 24 jurisdictions. Planning analyzed growth trends and prepared rankings for jobs and income data.

The analysis included personal income by major source and earnings by major industry, as well as wages and salaries by major industry in Maryland.

Local Update of Census Addresses

In FY 2018, Planning assisted in the completion of the Local Update of Census Addresses (LUCA). LUCA was the only opportunity for the state, counties, and local governments to review and update the U.S. Census Bureau's residential address list. LUCA enables the Census Bureau to reach every Maryland address, and its completion provides the foundation for a full and accurate count in 2020. The Census effort will use a data-driven approach to ensure that no Maryland resident is uncounted.

Census Boundary Updates

State Data Center and Planning staff were involved in other important activities that relate to the 2020 Census. Staff reviewed and updated census block boundaries for all 24 jurisdictions in Maryland based on suggestions from the U.S. Census Bureau and submitted the changes for 2020 Census block boundary update process.

Using print maps and GIS applications, Planning staff also completed a timely review of all of the voting districts in Maryland, including: election districts; precincts; legislative districts; and wards established by state and local governments for voting purposes. The review was sent to the Census Bureau as part of the Voter Tabulation District (VTD) process.



Statewide Emergency Operations Support

Planning provided demographic, economic, housing, and social data products, GIS support and technical assistance to state agencies and local governments, and assisted with the development of operational plans.

Staff monitored response activities to identify and locate vulnerable historic properties and cultural resources.

Among the activities conducted during the year, highlights include:

- Worked with the Maryland Emergency Management Agency (MEMA), the Maryland Energy Administration (MEA), and the Office of the Governor on a project funded through a competitive grant awarded by the National Governors Association;
- Surveyed more than 40 state agencies on problems associated with effective governance, evaluating risk, critical infrastructure, economic consequences and community ties. Planning analyzed the agency responses and will host a State Resiliency Assessment and Planning Retreat, where critical issues in state resiliency that were identified through those responses will be discussed with the Governor and his Cabinet;
- Prepared data products and provided technical support to the Department of Human Services and other State agencies that participated in a federally graded Emergency Exercise; and
- Participated in directing Statewide response and recovery activities after the flash flood events in Baltimore City, Baltimore, Howard, and Washington counties.



Planning provides demographic, economic, housing, and social data products, GIS support and technical assistance to state agencies and local governments during the incident and recovery stages of state emergencies. The department assists with the development of operational plans. Shown here are Maryland state agencies and other partners at the State Emergency Operations Center in Reisterstown.



Property Mapping

Statewide Parcel Data Management

Planning assembled parcel boundary files from local government sources, as well as parcel boundaries maintained and updated by Property Mapping, then linked the files to property assessment data for use in GIS and online applications. This data is available as a free download from Planning's website, and in the case of our *FINDER* Quantum product download, is bundled with free, open source GIS desktop software and a customized project file.

Tax Map Product Updates and Enhancements

Property Mapping performed updates and maintenance of the State's Tax Assessment Maps, made available in paper or digital image format, as well as for use in geographic information systems such as Planning's downloadable data products including *MdProperty View* and *FINDER* Quantum, and as an image service on MD iMAP.

Online Applications Enhancements

The *FINDER* Online web application was enhanced with updated aerial imagery, a topographic base map, and an option to view Tax Assessment Maps in alternate colors for enhanced display. *FINDER* Online provides free public access to property-related information as well as other planning and environmental data viewable over high-resolution aerial imagery.

Planning by the Numbers

FY 2018

Data Products Downloads

9,045 *MdProperty View* files

2,202 *FINDER* Quantum files

Online Parcel Map Visits

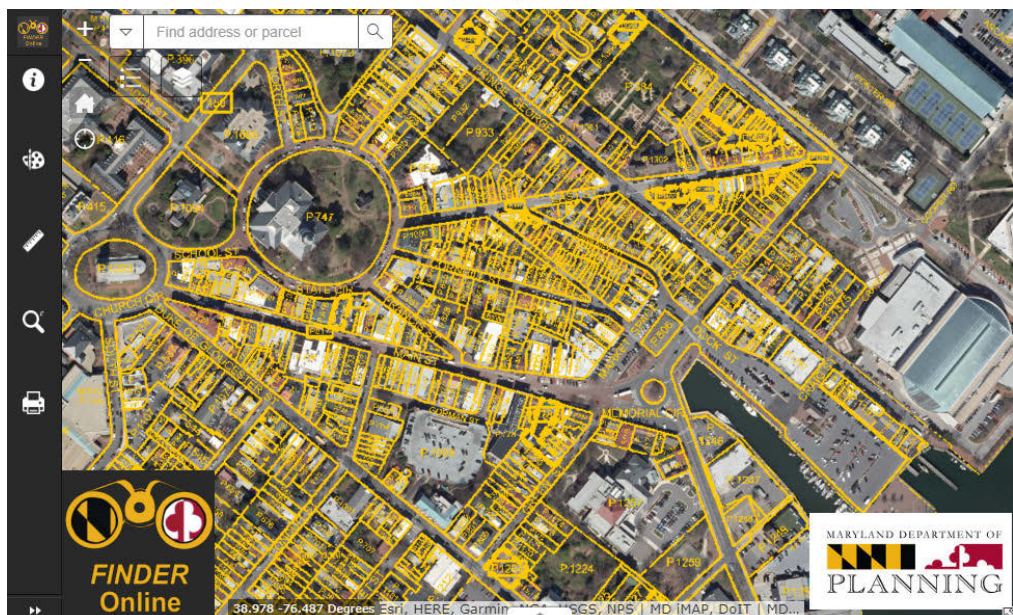
121,175 visits to *FINDER* Online

182,553 visits to Parcel Viewer

This adds up to:

Citizens and businesses having important data available when they need it.

***FINDER* Online** is Planning's online property information and parcel mapping system. Tax maps, property information, and aerial imagery combine to make a robust database of Maryland's 2.3 million parcels. Users can locate a property by searching or navigating the interactive map.



Maryland Historical Trust

In FY 2018, the Maryland Historical Trust (the Trust) administered a wide variety of research, protection, and financial assistance programs that aid state and local governments, nonprofit organizations, and individuals to undertake preservation-related activities.

Office of Planning, Education and Outreach

Heritage Areas Program

Governed by the Maryland Heritage Areas Authority (MHAA) and administered by the Trust, the Maryland Heritage Areas Program provides targeted financial and technical assistance within thirteen locally designated Heritage Areas, each of which represents a unique aspect of Maryland's historic and cultural character. In FY 2018, 117 grant applications were submitted, totaling \$5,510,352 in requests for heritage tourism projects and activities statewide. MHAA awarded \$2,695,655 to 50 projects that foster economic development through heritage tourism, leveraging \$4,419,472 in non-state matching support.

Planning by the Numbers

2018

Heritage Areas Program

117 grant applications

\$5.5 million requested

50 projects awarded

\$2.7 million funded

\$4.4 million leveraged

This adds up to:

Increased private investment in our future.



Planning Secretary Robert McCord, as chair of the Maryland Heritage Area Authority, bestows Certificates of Appreciation to outgoing Heritage Area Coalition chairs Amanda Fenstermaker, Heart of Chesapeake Country Heritage Area, and Liz Shatto, Heart of Civil War Heritage Area.



Dale Green of Morgan State University gives a tour of the Hill neighborhood in Easton, Maryland – part of the Stories of the Chesapeake Heritage Area. Image courtesy of Talbot County Government.

Statewide Preservation Plan

Each year, the Trust monitors the implementation of *PreserveMaryland*, a five-year plan that calls upon public agencies, private organizations, and individuals involved in preservation to work toward five statewide goals:

- Connect with broader audiences;
- Improve the framework for preservation;
- Expand and update documentation;
- Build capacity and strengthen networks; and
- Collaborate toward shared objectives.

In FY 2018, the Trust formed an interdisciplinary Advisory Committee to guide the update of the preservation plan for 2019-2024 and began public outreach. In addition to targeted surveys delivered online and in person, staff facilitated focus groups on specific topic areas and hosted open public meetings that drew more than 450 participants.

Local Government Assistance

As part of the Certified Local Government program, administered in partnership with the National Park Service (NPS), the Trust awarded \$83,401 to 11 of the 21 local government program participants. Funds supported preservation and archeology projects as well as education and training.

Weather It Together Program

Supported by a grant through the federal Hurricane Sandy Disaster Relief Fund, the statewide *Weather It Together* Program is aimed at protecting historic places, archeological sites, and cultural landscapes from the effects of natural hazards, such as flooding, wind, and coastal erosion. In FY 2018, staff offered one-on-one technical assistance to aid local governments ready to embark on hazard mitigation planning and stewarded \$280,000 in grants. With funding from the program, Talbot County, Dorchester County, the Town of Port Deposit, and the Town of Elkton completed planning projects to enhance their communities' resilience to natural hazards.

Staff developed a workshop "Hazard Planning for Small Sites and Museums" and presented at the Society for American Archaeology Annual Meeting to share the Trust's approach to the treatment of archeological sites endangered by flooding.



Office of Research, Survey and Registration

Research and Survey

In FY 2018, staff continued to administer six architectural and two archeological grant projects related to Hurricane Sandy, funded by the NPS, as well as deliverables for projects funded through the *Weather It Together* and Certified Local Government programs. For the first time in six years, in FY 2018, the Historic Preservation Non-Capital Grant Program provided \$200,000 to assist local governments and nonprofits for research, planning, and outreach activities, including archeological projects.

Staff added 95 standing structures and survey districts, as well as 46 updates, to the Maryland Inventory of Historic Properties - totaling more than 4,561 acres. Staff added 110 terrestrial archeological sites, as well as 66 updates, to the Maryland Inventory of Historic Properties. One hundred twenty-eight archeological survey reports were accessioned into the Library, covering 3,571 acres.

National Register of Historic Places

The National Park Service added St. Brigid's School and Convent and Remington Historic District – both in Baltimore City – to the National Register of Historic Places. Through these listings, 1,207 Maryland properties are afforded the benefits and protections of National Register designation. The NPS also designated Schifferstadt in Frederick County as a National Historic Landmark. The highest level of designation within the federal historic preservation program, National Historic Landmark status, is reserved for properties that possess exceptional value or quality in illustrating or interpreting the heritage of the United States. Schifferstadt is the 74th Maryland property to be so recognized.



Bay Breeze/Capt. Robert S. Craig Cottage in Ocean City is one of nine Maryland historic properties to be added to the National Register of Historic Places in FY 2018.



Cultural Resources Information System

In FY 2018, with the help of two grants from Maryland State Highway Administration, the Trust completed the conversion of Maryland Inventory of Historic Properties forms and associated records, including photographs, into digital format, making additional data made available online.

Military Monuments and Roadside Markers

In FY 2018, the Trust staff coordinated maintenance for fourteen monuments on the Western Shore and the World War I Memorial at the entrance of the Fifth Regiment Armory in Baltimore. In FY 2018, seven markers were installed as part of the Maryland Roadside Historical Marker Program.

The dedication of a new roadside marker honoring Virginia Hall, a Baltimore native and World War II spy. The marker program memorializes significant history throughout Maryland.



Office of Preservation Services

Review and Compliance

In FY 2018, the Trust reviewed more than 6,400 public undertakings pursuant to federal and state historic preservation legislation to assess the effects of those projects on cultural resources. Staff formally evaluated 324 resources identified within project areas for their eligibility in the National Register of Historic Places. Consultation resulted in 29 formal agreement documents to resolve the adverse effects of projects on significant cultural resources and afford pertinent mitigation measures.

Capital Grants and Loans

The Trust provided \$1 million in capital grants to 12 projects under the 2018 African American Heritage Preservation Program. The program received 40 eligible applications for a total funding request of more than \$3.3 million. In FY 2018, Governor Hogan fully funded the Historic Preservation Capital Grant Program for the first time since 2009, with \$600,000 available for capital projects including acquisition and rehabilitation. The program received 74 applications requesting a total of \$5,419,650 in funding for projects in 18 counties and Baltimore City.



At Silver Spring's National Park Seminary campus, the formerly vacant Power Plant, Practice Hall, and Fire Station buildings are undergoing a major rehabilitation effort, which involves the conversion of the former institutional, educational, and support infrastructures into rental housing. The project has also been awarded a Maryland Heritage Structure Rehabilitation Tax Credit. The Trust's easement resulted from the transfer of the campus out of federal ownership, and rehabilitation of the unique structures has been ongoing for 15 years. Below are before (left) and after (right) photos of the rehabilitation effort.



The 1914 Hearn Hardware Company building in Cambridge received \$1,080,000 in 2018 Historic Structure Rehabilitation Tax Credits to restore its historic appearance and create a mix of rental apartments and first floor commercial spaces. The project, with estimated \$5,400,000 in investment, will contribute to the revitalization of the streetscape.



Heritage Structure Rehabilitation Tax Credit Program

The Maryland Heritage Structure Rehabilitation Tax Credit Program has helped restore thousands of homes and commercial buildings that contribute to the distinct character and economic vibrancy of Maryland’s towns, cities, and rural areas. In FY 2018, 17 applicants sought \$27.9 million in tax credits for construction projects totaling an estimated \$233.4 million. The Trust awarded more than \$9 million in tax credits, expected to leverage private investment of more than \$36 million. In FY 2018, the program approved seven proposed Small Commercial Tax Credit projects worth \$169,844 and 165 proposed Homeowner Tax Credit projects worth an estimated \$1,832,492 across the state.

<i>Planning by the Numbers</i>		<i>FY 2018</i>
Heritage Structure Rehabilitation Tax Credit Program		
17 applications		\$9 million funded
\$27.9 million requested		\$36 million leveraged.
8 projects awarded		
This adds up to:		
Increased private investment in our future.		

Historic Preservation Easement Program

In FY 2018, the Trust acquired two new easements or modifications. The program currently holds 706 easements on 924 properties, encompassing approximately 7,720 acres statewide, most providing perpetual protection. During the year, the Easement Committee reviewed approximately 114 requests from property owners/operators for changes to these easement properties, including full scale projects and minor alterations. Staff conducted 73 easement property inspections statewide.



Jefferson Patterson Park and Museum

Located on 560 acres on the Patuxent River in Calvert County, the Jefferson Patterson Park and Museum (JPPM) connects people to the past through history and archeology and supports the preservation of Maryland’s cultural resources. JPPM is the home of the Maryland Archaeological Conservation Laboratory (MAC Lab), a state-of-the-art facility dedicated to archeological conservation and research.

Educational Programs and Events

In FY 2018, more than 88,000 people visited the park. In the fall of 2017, JPPM invited the public to an open house at the Patterson House, prior to closing for renovations until 2021. More than 1,800 people enjoyed the first-ever Halloween Festival and the second annual 5k Run/Walk in October. In November 2017, JPPM celebrated American Indian Heritage Day with hands-on activities and programs in the park’s recreated Indian Village. In early June 2018, Planning staff joined Senator Bernie Fowler for the 31st Annual Patuxent River Wade-In, as concerned citizens and elected officials joined to focus attention on the need to clean up the Patuxent River.

JPPM’s commitment to serving area schools continued through two onsite programs, one designed for fourth graders and one designed for sixth graders. As in years past, staff members worked with students from Huntingtown High School on an archeology-based project. This year Huntingtown High School’s Archaeology Club presented their research findings during JPPM’s annual Speaker Series. In total, more than 3,500 children participated in educational programs in FY 2018.

Maryland Archaeological Conservation Lab

In FY 2018, MAC Lab staff conserved artifacts from clients throughout the United States, including: the NPS; Jamestown-Yorktown Foundation; the U.S. Navy; Delaware State Parks; City of Deadwood; Delaware Public Archives; New York State Museum; Alexandria Archaeology; Museum of the American Revolution; Calvert Marine Museum; Chesapeake Beach Railway Museum; George Washington’s Mount Vernon; James Madison’s Montpelier; Thomas Jefferson’s Monticello; Thomas Jefferson’s Poplar Forest; University of Mary Washington; and the University of Maryland. In the spring of 2018, the MAC Lab held a two-day workshop focused on artifact identification and conservation strategies, which was open to any practicing professionals and graduate students in the field of archeology.



Two of the many happy visitors who attended JPPM’s first Halloween Festival. More than 1,800 people came out for this and other events in FY 2018.





THE CUSTOMER SERVICE PROMISE

The State of Maryland pledges to provide constituents, businesses, customers, and stakeholders with services in the following manner:

- **Friendly and Courteous:** We will be helpful and supportive and have a positive attitude and passion for what we do.
- **Timely and Responsive:** We will be proactive, take initiative, and anticipate your needs.
- **Accurate and Consistent:** We will always aim for 100% accuracy, and be consistent in how we interpret and implement state policies and procedures.
- **Accessible and Convenient:** We will continue to simplify and improve access to information and resources.
- **Truthful and Transparent:** We will advance a culture of honesty, clarity and trust.



CHANGING
Maryland
for the Better

MARYLAND DEPARTMENT OF

PLANNING

Maryland Department of Planning
301 W. Preston St., 11th Floor
Baltimore, MD 21201
Planning.Maryland.gov
(410) 767-4500 • (877) 767-6272
Publication Number: 2018-102
November 2018



Larry Hogan, Governor
Boyd Rutherford, Lt. Governor

Robert S. McCord, Secretary